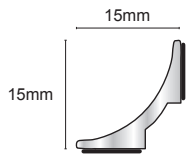


EWA

Product Datasheet 4.19



Use in conjunction with EAA to create a full system



Aluminium Self Adhesive Internal Trim

81 Matt Silver

91 Bright Silver



Product Description

EWA applied retrospectively secured into position with the pre-bonded adhesive tape, simply remove the carrier and apply to the prepared area. Ideal not only for internal corners but also floor and worktop applications, a range of complimentary accessories complete the perfect finish.

Technical Details

Profiles are available in different anodised finishes and powder coated finishes - All natural Aluminium (Mill Finish) has a oxide film of approx 0.2 microns, when Mechanically and Chemically polished the anodising process increases this to 5 microns, up-to 20 for the Matt finish and 100 for Powder coated.

Aluminium AA 6063 T6 / UNS A96063 anodised to DIN 17611

Si%	0.2-0.6
Fe%	0.35
Cu%	0.1
Mn%	0.1
Mg%	0.45-0.9
Zn%	0.1
Ti%	0.1
Cr%	0.1
Al	Balance

Dimensions

Available in 2.5m lengths, 15mm x 15mm.

Maintenance

Genesis EWA does not require any special maintenance. Oxidation films on Aluminium may be removed with a common polishing agent; however, they do reoccur. Damaged anodised finishes may only be repaired by recoating.

Aluminium must be tested to verify its suitability if chemical stresses are anticipated.

Cementitious materials, in conjunction with moisture, become alkaline. Since aluminium is sensitive to alkaline substances, exposure to the alkali (depending on the concentration and time of exposure) may result in corrosion (aluminium hydroxide formation). Therefore, it is important to remove adhesive or grout residue from visible surfaces. In addition, ensure that the profile is solidly embedded in the setting material and that all cavities are filled to prevent the collection of alkaline water.

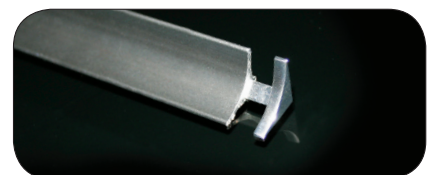
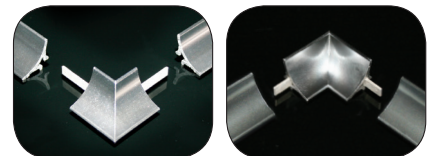
The anodised layer creates a finish that retains a uniform appearance during normal use. The surface, however, is susceptible to scratching and wear and may be damaged by tile adhesive, mortar, or grouting material. Therefore, setting materials must be removed immediately. Otherwise, the description regarding aluminium applies.

Installation

1. Ensure that the surface where the EWA profile is being applied is smooth, dry and free from any contaminants such as loose paint, dust and grease.
2. Remove the backing from the self adhesive strip.
3. Carefully place the EWA profile into position and apply an even pressure over the entire surface of the profile until a satisfactory lie is achieved.
4. Remove the protective film from the surface of the profile.

Allied Products

ETA profiles have specially designed external corner pieces EWE and internal corner pieces EWI designed to provide a perfect safe edge when mitring, and end caps EWC, to achieve a neat finish on visible ends.



+44 (0)1642 713000 info@genesis-gs.com
www.genesis-gs.com

 **Genesis**
For the Perfect Finish